

UNION TOOL

# DLC-UMD-TY

DLCコート超硬ドリル

# UMD-TY

ノンコート超硬ドリル



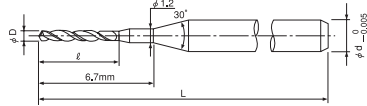
一般鋼・アルミ・樹脂加工に最適

# DLC-UMD-TY

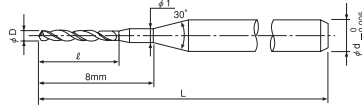


DLC コート超硬ドリル (アルミ・樹脂加工用)

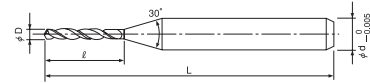
■  $\phi$  0.1 ~  $\phi$  0.25



■  $\phi$  0.26 ~  $\phi$  0.65



■  $\phi$  0.66 ~  $\phi$  3



- ・先端角：120°
- ・サイズ及び公差によって図のような形状にならない場合があります。
- ・ $\phi$ 3は、ストレートタイプ



炭素鋼 S45C S50C	合金鋼 SK SCM	プリハードン鋼 NAK HPM	焼入れ鋼			鋳鉄	アルミ合金	クラフタイト	銅	樹脂	ガラス入り樹脂	チタン合金	超耐熱合金	超硬合金	硬脆材
			~ 55HRC	~ 60HRC	~ 70HRC										
							◎		○	◎					

単位：mm

TYコード	型番	直径		溝長	全長	シャンク径
		$\phi$ D	$\ell$			
UN00292	DLC-UMD-TY 0010	0.1	1.2	38	3	
UN00293	DLC-UMD-TY 0011	0.11	1.2	38	3	
UN00294	DLC-UMD-TY 0012	0.12	1.4	38	3	
UN00295	DLC-UMD-TY 0013	0.13	1.4	38	3	
UN00296	DLC-UMD-TY 0014	0.14	1.4	38	3	
UN00297	DLC-UMD-TY 0015	0.15	2	38	3	
UN00298	DLC-UMD-TY 0016	0.16	2	38	3	
UN00299	DLC-UMD-TY 0017	0.17	2	38	3	
UN00300	DLC-UMD-TY 0018	0.18	2	38	3	
UN00301	DLC-UMD-TY 0019	0.19	2	38	3	
UN00302	DLC-UMD-TY 0020	0.2	2.5	38	3	
UN00303	DLC-UMD-TY 0021	0.21	2.5	38	3	
UN00304	DLC-UMD-TY 0022	0.22	2.5	38	3	
UN00305	DLC-UMD-TY 0023	0.23	2.5	38	3	
UN00306	DLC-UMD-TY 0024	0.24	2.5	38	3	
UN00307	DLC-UMD-TY 0025	0.25	3	38	3	
UN00308	DLC-UMD-TY 0026	0.26	3	38	3	
UN00309	DLC-UMD-TY 0027	0.27	3	38	3	
UN00310	DLC-UMD-TY 0028	0.28	3	38	3	
UN00311	DLC-UMD-TY 0029	0.29	3	38	3	
UN00312	DLC-UMD-TY 0030	0.3	5	38	3	
UN00313	DLC-UMD-TY 0031	0.31	5	38	3	
UN00314	DLC-UMD-TY 0032	0.32	5	38	3	
UN00315	DLC-UMD-TY 0033	0.33	5	38	3	
UN00316	DLC-UMD-TY 0034	0.34	5	38	3	
UN00317	DLC-UMD-TY 0035	0.35	6	38	3	
UN00318	DLC-UMD-TY 0036	0.36	6	38	3	
UN00319	DLC-UMD-TY 0037	0.37	6	38	3	
UN00320	DLC-UMD-TY 0038	0.38	6	38	3	
UN00321	DLC-UMD-TY 0039	0.39	6	38	3	
UN00322	DLC-UMD-TY 0040	0.4	7	38	3	
UN00323	DLC-UMD-TY 0041	0.41	7	38	3	
UN00324	DLC-UMD-TY 0042	0.42	7	38	3	
UN00325	DLC-UMD-TY 0043	0.43	7	38	3	
UN00326	DLC-UMD-TY 0044	0.44	7	38	3	
UN00327	DLC-UMD-TY 0045	0.45	7	38	3	
UN00328	DLC-UMD-TY 0046	0.46	7	38	3	
UN00329	DLC-UMD-TY 0047	0.47	7	38	3	
UN00330	DLC-UMD-TY 0048	0.48	7	38	3	
UN00331	DLC-UMD-TY 0049	0.49	7	38	3	
UN00332	DLC-UMD-TY 0050	0.5	7	38	3	
UN00333	DLC-UMD-TY 0051	0.51	7	38	3	
UN00334	DLC-UMD-TY 0052	0.52	7	38	3	
UN00335	DLC-UMD-TY 0053	0.53	7	38	3	
UN00336	DLC-UMD-TY 0054	0.54	7	38	3	

TYコード	型番	直径		溝長	全長	シャンク径
		$\phi$ D	$\ell$			
UN00337	DLC-UMD-TY 0055	0.55	7	38	3	
UN00338	DLC-UMD-TY 0056	0.56	7	38	3	
UN00339	DLC-UMD-TY 0057	0.57	7	38	3	
UN00340	DLC-UMD-TY 0058	0.58	7	38	3	
UN00341	DLC-UMD-TY 0059	0.59	7	38	3	
UN00342	DLC-UMD-TY 0060	0.6	7	38	3	
UN00343	DLC-UMD-TY 0061	0.61	7	38	3	
UN00344	DLC-UMD-TY 0062	0.62	7	38	3	
UN00345	DLC-UMD-TY 0063	0.63	7	38	3	
UN00346	DLC-UMD-TY 0064	0.64	7	38	3	
UN00347	DLC-UMD-TY 0065	0.65	7	38	3	
UN00348	DLC-UMD-TY 0066	0.66	7	38	3	
UN00349	DLC-UMD-TY 0067	0.67	7	38	3	
UN00350	DLC-UMD-TY 0068	0.68	7	38	3	
UN00351	DLC-UMD-TY 0069	0.69	7	38	3	
UN00352	DLC-UMD-TY 0070	0.7	8	38	3	
UN00353	DLC-UMD-TY 0071	0.71	8	38	3	
UN00354	DLC-UMD-TY 0072	0.72	8	38	3	
UN00355	DLC-UMD-TY 0073	0.73	8	38	3	
UN00356	DLC-UMD-TY 0074	0.74	8	38	3	
UN00357	DLC-UMD-TY 0075	0.75	8	38	3	
UN00358	DLC-UMD-TY 0076	0.76	8	38	3	
UN00359	DLC-UMD-TY 0077	0.77	8	38	3	
UN00360	DLC-UMD-TY 0078	0.78	8	38	3	
UN00361	DLC-UMD-TY 0079	0.79	8	38	3	
UN00362	DLC-UMD-TY 0080	0.8	10	38	3	
UN00363	DLC-UMD-TY 0081	0.81	10	38	3	
UN00364	DLC-UMD-TY 0082	0.82	10	38	3	
UN00365	DLC-UMD-TY 0083	0.83	10	38	3	
UN00366	DLC-UMD-TY 0084	0.84	10	38	3	
UN00367	DLC-UMD-TY 0085	0.85	10	38	3	
UN00368	DLC-UMD-TY 0086	0.86	10	38	3	
UN00369	DLC-UMD-TY 0087	0.87	10	38	3	
UN00370	DLC-UMD-TY 0088	0.88	10	38	3	
UN00371	DLC-UMD-TY 0089	0.89	10	38	3	
UN00372	DLC-UMD-TY 0090	0.9	10	38	3	
UN00373	DLC-UMD-TY 0091	0.91	10	38	3	
UN00374	DLC-UMD-TY 0092	0.92	10	38	3	
UN00375	DLC-UMD-TY 0093	0.93	10	38	3	
UN00376	DLC-UMD-TY 0094	0.94	10	38	3	
UN00377	DLC-UMD-TY 0095	0.95	10	38	3	
UN00378	DLC-UMD-TY 0096	0.96	10	38	3	
UN00379	DLC-UMD-TY 0097	0.97	10	38	3	
UN00380	DLC-UMD-TY 0098	0.98	10	38	3	
UN00381	DLC-UMD-TY 0099	0.99	10	38	3	

◀前ページより

単位：mm

TYコード	型番	直径	溝長	全長	シャフト径
		φD	ℓ	L	φd
UN00382	<b>DLC-UMD-TY 0100</b>	1	10	38	3
UN00383	<b>DLC-UMD-TY 0101</b>	1.01	10	38	3
UN00384	<b>DLC-UMD-TY 0102</b>	1.02	10	38	3
UN00385	<b>DLC-UMD-TY 0103</b>	1.03	10	38	3
UN00386	<b>DLC-UMD-TY 0104</b>	1.04	10	38	3
UN00387	<b>DLC-UMD-TY 0105</b>	1.05	10	38	3
UN00388	<b>DLC-UMD-TY 0106</b>	1.06	10	38	3
UN00389	<b>DLC-UMD-TY 0107</b>	1.07	10	38	3
UN00390	<b>DLC-UMD-TY 0108</b>	1.08	10	38	3
UN00391	<b>DLC-UMD-TY 0109</b>	1.09	10	38	3
UN00392	<b>DLC-UMD-TY 0110</b>	1.1	10	38	3
UN00393	<b>DLC-UMD-TY 0111</b>	1.11	10	38	3
UN00394	<b>DLC-UMD-TY 0112</b>	1.12	10	38	3
UN00395	<b>DLC-UMD-TY 0113</b>	1.13	10	38	3
UN00396	<b>DLC-UMD-TY 0114</b>	1.14	10	38	3
UN00397	<b>DLC-UMD-TY 0115</b>	1.15	10	38	3
UN00398	<b>DLC-UMD-TY 0116</b>	1.16	10	38	3
UN00399	<b>DLC-UMD-TY 0117</b>	1.17	10	38	3
UN00400	<b>DLC-UMD-TY 0118</b>	1.18	10	38	3
UN00401	<b>DLC-UMD-TY 0119</b>	1.19	10	38	3
UN00402	<b>DLC-UMD-TY 0120</b>	1.2	10	38	3
UN00403	<b>DLC-UMD-TY 0121</b>	1.21	10	38	3
UN00404	<b>DLC-UMD-TY 0122</b>	1.22	10	38	3
UN00405	<b>DLC-UMD-TY 0123</b>	1.23	10	38	3
UN00406	<b>DLC-UMD-TY 0124</b>	1.24	10	38	3
UN00407	<b>DLC-UMD-TY 0125</b>	1.25	10	38	3
UN00408	<b>DLC-UMD-TY 0126</b>	1.26	10	38	3
UN00409	<b>DLC-UMD-TY 0127</b>	1.27	10	38	3
UN00410	<b>DLC-UMD-TY 0128</b>	1.28	10	38	3
UN00411	<b>DLC-UMD-TY 0129</b>	1.29	10	38	3
UN00412	<b>DLC-UMD-TY 0130</b>	1.3	10	38	3
UN00413	<b>DLC-UMD-TY 0131</b>	1.31	10	38	3
UN00414	<b>DLC-UMD-TY 0132</b>	1.32	10	38	3
UN00415	<b>DLC-UMD-TY 0133</b>	1.33	10	38	3
UN00416	<b>DLC-UMD-TY 0134</b>	1.34	10	38	3
UN00417	<b>DLC-UMD-TY 0135</b>	1.35	10	38	3
UN00418	<b>DLC-UMD-TY 0136</b>	1.36	10	38	3
UN00419	<b>DLC-UMD-TY 0137</b>	1.37	10	38	3
UN00420	<b>DLC-UMD-TY 0138</b>	1.38	10	38	3
UN00421	<b>DLC-UMD-TY 0139</b>	1.39	10	38	3
UN00422	<b>DLC-UMD-TY 0140</b>	1.4	10	38	3
UN00423	<b>DLC-UMD-TY 0141</b>	1.41	10	38	3
UN00424	<b>DLC-UMD-TY 0142</b>	1.42	10	38	3
UN00425	<b>DLC-UMD-TY 0143</b>	1.43	10	38	3
UN00426	<b>DLC-UMD-TY 0144</b>	1.44	10	38	3
UN00427	<b>DLC-UMD-TY 0145</b>	1.45	10	38	3
UN00428	<b>DLC-UMD-TY 0146</b>	1.46	10	38	3
UN00429	<b>DLC-UMD-TY 0147</b>	1.47	10	38	3
UN00430	<b>DLC-UMD-TY 0148</b>	1.48	10	38	3
UN00431	<b>DLC-UMD-TY 0149</b>	1.49	10	38	3
UN00432	<b>DLC-UMD-TY 0150</b>	1.5	10	38	3
UN00433	<b>DLC-UMD-TY 0151</b>	1.51	10	38	3
UN00434	<b>DLC-UMD-TY 0152</b>	1.52	10	38	3
UN00435	<b>DLC-UMD-TY 0153</b>	1.53	10	38	3
UN00436	<b>DLC-UMD-TY 0154</b>	1.54	10	38	3
UN00437	<b>DLC-UMD-TY 0155</b>	1.55	10	38	3
UN00438	<b>DLC-UMD-TY 0156</b>	1.56	10	38	3
UN00439	<b>DLC-UMD-TY 0157</b>	1.57	10	38	3
UN00440	<b>DLC-UMD-TY 0158</b>	1.58	10	38	3
UN00441	<b>DLC-UMD-TY 0159</b>	1.59	10	38	3
UN00442	<b>DLC-UMD-TY 0160</b>	1.6	12	38	3
UN00443	<b>DLC-UMD-TY 0161</b>	1.61	12	38	3

TYコード	型番	直径	溝長	全長	シャフト径
		φD	ℓ	L	φd
UN00444	<b>DLC-UMD-TY 0162</b>	1.62	12	38	3
UN00445	<b>DLC-UMD-TY 0163</b>	1.63	12	38	3
UN00446	<b>DLC-UMD-TY 0164</b>	1.64	12	38	3
UN00447	<b>DLC-UMD-TY 0165</b>	1.65	12	38	3
UN00448	<b>DLC-UMD-TY 0166</b>	1.66	12	38	3
UN00449	<b>DLC-UMD-TY 0167</b>	1.67	12	38	3
UN00450	<b>DLC-UMD-TY 0168</b>	1.68	12	38	3
UN00451	<b>DLC-UMD-TY 0169</b>	1.69	12	38	3
UN00452	<b>DLC-UMD-TY 0170</b>	1.7	12	38	3
UN00453	<b>DLC-UMD-TY 0171</b>	1.71	12	38	3
UN00454	<b>DLC-UMD-TY 0172</b>	1.72	12	38	3
UN00455	<b>DLC-UMD-TY 0173</b>	1.73	12	38	3
UN00456	<b>DLC-UMD-TY 0174</b>	1.74	12	38	3
UN00457	<b>DLC-UMD-TY 0175</b>	1.75	12	38	3
UN00458	<b>DLC-UMD-TY 0176</b>	1.76	12	38	3
UN00459	<b>DLC-UMD-TY 0177</b>	1.77	12	38	3
UN00460	<b>DLC-UMD-TY 0178</b>	1.78	12	38	3
UN00461	<b>DLC-UMD-TY 0179</b>	1.79	12	38	3
UN00462	<b>DLC-UMD-TY 0180</b>	1.8	12	38	3
UN00463	<b>DLC-UMD-TY 0181</b>	1.81	12	38	3
UN00464	<b>DLC-UMD-TY 0182</b>	1.82	12	38	3
UN00465	<b>DLC-UMD-TY 0183</b>	1.83	12	38	3
UN00466	<b>DLC-UMD-TY 0184</b>	1.84	12	38	3
UN00467	<b>DLC-UMD-TY 0185</b>	1.85	12	38	3
UN00468	<b>DLC-UMD-TY 0186</b>	1.86	12	38	3
UN00469	<b>DLC-UMD-TY 0187</b>	1.87	12	38	3
UN00470	<b>DLC-UMD-TY 0188</b>	1.88	12	38	3
UN00471	<b>DLC-UMD-TY 0189</b>	1.89	12	38	3
UN00472	<b>DLC-UMD-TY 0190</b>	1.9	12	38	3
UN00473	<b>DLC-UMD-TY 0191</b>	1.91	12	38	3
UN00474	<b>DLC-UMD-TY 0192</b>	1.92	12	38	3
UN00475	<b>DLC-UMD-TY 0193</b>	1.93	12	38	3
UN00476	<b>DLC-UMD-TY 0194</b>	1.94	12	38	3
UN00477	<b>DLC-UMD-TY 0195</b>	1.95	12	38	3
UN00478	<b>DLC-UMD-TY 0196</b>	1.96	12	38	3
UN00479	<b>DLC-UMD-TY 0197</b>	1.97	12	38	3
UN00480	<b>DLC-UMD-TY 0198</b>	1.98	12	38	3
UN00481	<b>DLC-UMD-TY 0199</b>	1.99	12	38	3
UN00482	<b>DLC-UMD-TY 0200</b>	2	12	38	3
UN00483	<b>DLC-UMD-TY 0201</b>	2.01	12	38	3
UN00484	<b>DLC-UMD-TY 0202</b>	2.02	12	38	3
UN00485	<b>DLC-UMD-TY 0203</b>	2.03	12	38	3
UN00486	<b>DLC-UMD-TY 0204</b>	2.04	12	38	3
UN00487	<b>DLC-UMD-TY 0205</b>	2.05	12	38	3
UN00488	<b>DLC-UMD-TY 0206</b>	2.06	12	38	3
UN00489	<b>DLC-UMD-TY 0207</b>	2.07	12	38	3
UN00490	<b>DLC-UMD-TY 0208</b>	2.08	12	38	3
UN00491	<b>DLC-UMD-TY 0209</b>	2.09	12	38	3
UN00492	<b>DLC-UMD-TY 0210</b>	2.1	12	38	3
UN00493	<b>DLC-UMD-TY 0211</b>	2.11	12	38	3
UN00494	<b>DLC-UMD-TY 0212</b>	2.12	12	38	3
UN00495	<b>DLC-UMD-TY 0213</b>	2.13	12	38	3
UN00496	<b>DLC-UMD-TY 0214</b>	2.14	12	38	3
UN00497	<b>DLC-UMD-TY 0215</b>	2.15	12	38	3
UN00498	<b>DLC-UMD-TY 0216</b>	2.16	12	38	3
UN00499	<b>DLC-UMD-TY 0217</b>	2.17	12	38	3
UN00500	<b>DLC-UMD-TY 0218</b>	2.18	12	38	3
UN00501	<b>DLC-UMD-TY 0219</b>	2.19	12	38	3
UN00502	<b>DLC-UMD-TY 0220</b>	2.2	12	38	3
UN00503	<b>DLC-UMD-TY 0221</b>	2.21	12	38	3
UN00504	<b>DLC-UMD-TY 0222</b>	2.22	12	38	3
UN00505	<b>DLC-UMD-TY 0223</b>	2.23	12	38	3

次ページへ▶

◀前ページより

単位：mm

TYコード	型番	直径	溝長	全長	シャンク径
		φD	ℓ	L	φd
UN00506	<b>DLC-UMD-TY 0224</b>	2.24	12	38	3
UN00507	<b>DLC-UMD-TY 0225</b>	2.25	12	38	3
UN00508	<b>DLC-UMD-TY 0226</b>	2.26	12	38	3
UN00509	<b>DLC-UMD-TY 0227</b>	2.27	12	38	3
UN00510	<b>DLC-UMD-TY 0228</b>	2.28	12	38	3
UN00511	<b>DLC-UMD-TY 0229</b>	2.29	12	38	3
UN00512	<b>DLC-UMD-TY 0230</b>	2.3	12	38	3
UN00513	<b>DLC-UMD-TY 0231</b>	2.31	12	38	3
UN00514	<b>DLC-UMD-TY 0232</b>	2.32	12	38	3
UN00515	<b>DLC-UMD-TY 0233</b>	2.33	12	38	3
UN00516	<b>DLC-UMD-TY 0234</b>	2.34	12	38	3
UN00517	<b>DLC-UMD-TY 0235</b>	2.35	12	38	3
UN00518	<b>DLC-UMD-TY 0236</b>	2.36	12	38	3
UN00519	<b>DLC-UMD-TY 0237</b>	2.37	12	38	3
UN00520	<b>DLC-UMD-TY 0238</b>	2.38	12	38	3
UN00521	<b>DLC-UMD-TY 0239</b>	2.39	12	38	3
UN00522	<b>DLC-UMD-TY 0240</b>	2.4	12	38	3
UN00523	<b>DLC-UMD-TY 0241</b>	2.41	12	38	3
UN00524	<b>DLC-UMD-TY 0242</b>	2.42	12	38	3
UN00525	<b>DLC-UMD-TY 0243</b>	2.43	12	38	3
UN00526	<b>DLC-UMD-TY 0244</b>	2.44	12	38	3
UN00527	<b>DLC-UMD-TY 0245</b>	2.45	12	38	3
UN00528	<b>DLC-UMD-TY 0246</b>	2.46	12	38	3
UN00529	<b>DLC-UMD-TY 0247</b>	2.47	12	38	3
UN00530	<b>DLC-UMD-TY 0248</b>	2.48	12	38	3
UN00531	<b>DLC-UMD-TY 0249</b>	2.49	12	38	3
UN00532	<b>DLC-UMD-TY 0250</b>	2.5	12	38	3
UN00533	<b>DLC-UMD-TY 0251</b>	2.51	12	38	3
UN00534	<b>DLC-UMD-TY 0252</b>	2.52	12	38	3
UN00535	<b>DLC-UMD-TY 0253</b>	2.53	12	38	3
UN00536	<b>DLC-UMD-TY 0254</b>	2.54	12	38	3
UN00537	<b>DLC-UMD-TY 0255</b>	2.55	12	38	3
UN00538	<b>DLC-UMD-TY 0256</b>	2.56	12	38	3
UN00539	<b>DLC-UMD-TY 0257</b>	2.57	12	38	3
UN00540	<b>DLC-UMD-TY 0258</b>	2.58	12	38	3
UN00541	<b>DLC-UMD-TY 0259</b>	2.59	12	38	3
UN00542	<b>DLC-UMD-TY 0260</b>	2.6	12	38	3
UN00543	<b>DLC-UMD-TY 0261</b>	2.61	12	38	3
UN00544	<b>DLC-UMD-TY 0262</b>	2.62	12	38	3

TYコード	型番	直径	溝長	全長	シャンク径
		φD	ℓ	L	φd
UN00545	<b>DLC-UMD-TY 0263</b>	2.63	12	38	3
UN00546	<b>DLC-UMD-TY 0264</b>	2.64	12	38	3
UN00547	<b>DLC-UMD-TY 0265</b>	2.65	12	38	3
UN00548	<b>DLC-UMD-TY 0266</b>	2.66	12	38	3
UN00549	<b>DLC-UMD-TY 0267</b>	2.67	12	38	3
UN00550	<b>DLC-UMD-TY 0268</b>	2.68	12	38	3
UN00551	<b>DLC-UMD-TY 0269</b>	2.69	12	38	3
UN00552	<b>DLC-UMD-TY 0270</b>	2.7	12	38	3
UN00553	<b>DLC-UMD-TY 0271</b>	2.71	12	38	3
UN00554	<b>DLC-UMD-TY 0272</b>	2.72	12	38	3
UN00555	<b>DLC-UMD-TY 0273</b>	2.73	12	38	3
UN00556	<b>DLC-UMD-TY 0274</b>	2.74	12	38	3
UN00557	<b>DLC-UMD-TY 0275</b>	2.75	12	38	3
UN00558	<b>DLC-UMD-TY 0276</b>	2.76	12	38	3
UN00559	<b>DLC-UMD-TY 0277</b>	2.77	12	38	3
UN00560	<b>DLC-UMD-TY 0278</b>	2.78	12	38	3
UN00561	<b>DLC-UMD-TY 0279</b>	2.79	12	38	3
UN00562	<b>DLC-UMD-TY 0280</b>	2.8	12	38	3
UN00563	<b>DLC-UMD-TY 0281</b>	2.81	12	38	3
UN00564	<b>DLC-UMD-TY 0282</b>	2.82	12	38	3
UN00565	<b>DLC-UMD-TY 0283</b>	2.83	12	38	3
UN00566	<b>DLC-UMD-TY 0284</b>	2.84	12	38	3
UN00567	<b>DLC-UMD-TY 0285</b>	2.85	12	38	3
UN00568	<b>DLC-UMD-TY 0286</b>	2.86	12	38	3
UN00569	<b>DLC-UMD-TY 0287</b>	2.87	12	38	3
UN00570	<b>DLC-UMD-TY 0288</b>	2.88	12	38	3
UN00571	<b>DLC-UMD-TY 0289</b>	2.89	12	38	3
UN00572	<b>DLC-UMD-TY 0290</b>	2.9	12	38	3
UN00573	<b>DLC-UMD-TY 0291</b>	2.91	12	38	3
UN00574	<b>DLC-UMD-TY 0292</b>	2.92	12	38	3
UN00575	<b>DLC-UMD-TY 0293</b>	2.93	12	38	3
UN00576	<b>DLC-UMD-TY 0294</b>	2.94	12	38	3
UN00577	<b>DLC-UMD-TY 0295</b>	2.95	12	38	3
UN00578	<b>DLC-UMD-TY 0296</b>	2.96	12	38	3
UN00579	<b>DLC-UMD-TY 0297</b>	2.97	12	38	3
UN00580	<b>DLC-UMD-TY 0298</b>	2.98	12	38	3
UN00581	<b>DLC-UMD-TY 0299</b>	2.99	12	38	3
UN00582	<b>DLC-UMD-TY 0300</b>	3	12	38	3

**DLC-UMD-TY 切削条件表**

被削材	アルミ合金 A5052 等		銅合金		樹脂 ポリカーボネート等	
	回転速度 (min-1)	送り速度 (mm/min)	回転速度 (min-1)	送り速度 (mm/min)	回転速度 (min-1)	送り速度 (mm/min)
直径 (D) (mm)						
<b>0.3</b>	20,000	400	20,000	80	20,000	320
<b>0.4</b>	20,000	690	17,400	100	20,000	550
<b>0.5</b>	20,000	1,000	15,900	160	20,000	800
<b>0.6</b>	19,900	1,050	14,100	160	19,900	880
<b>0.7</b>	19,900	1,120	12,800	180	19,900	950
<b>0.8</b>	19,900	1,190	11,900	200	19,900	1,000
<b>0.9</b>	17,600	1,220	10,500	200	17,600	1,020
<b>1</b>	15,900	1,270	9,500	200	15,900	1,080
<b>2</b>	9,500	950	5,600	340	9,500	820
<b>3</b>	6,400	640	3,700	300	6,400	550

【備考】 ステップ量：アルミ合金，樹脂 0.2D~0.5D。 その他 0.1D~0.2D。



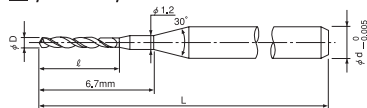
※特定代理店商品

# UMD-TY

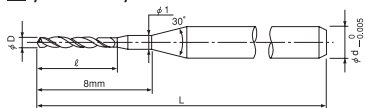
ノンコート超硬ドリル



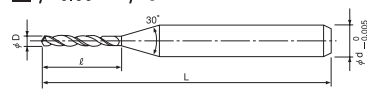
■φ 0.1 ~ φ 0.25



■φ 0.26 ~ φ 0.65



■φ 0.66 ~ φ 3



- ・先端角：120°
- ・サイズ及び公差によって図のような形状にならない場合があります。
- ・φ3は、ストレートタイプ

Super MG 24° 直径 0/-0.005 シャンク径 0/-0.005

炭素鋼 S45C S50C	合金鋼 SK SCM	プリハードン鋼 NAK HPM	焼入れ鋼			鋳鉄	アルミ合金	グラファイト	銅	樹脂	ガラス入り樹脂	チタン合金	超耐熱合金	超硬合金	硬脆材
			~ 55HRC	~ 60HRC	~ 70HRC										
○							◎		◎						

単位：mm

TYコード	型番	直径	溝長	全長	シャンク径
		φD	ℓ	L	φd
UN00001	UMD-TY 0010	0.1	1.2	38	3
UN00002	UMD-TY 0011	0.11	1.2	38	3
UN00003	UMD-TY 0012	0.12	1.4	38	3
UN00004	UMD-TY 0013	0.13	1.4	38	3
UN00005	UMD-TY 0014	0.14	1.4	38	3
UN00006	UMD-TY 0015	0.15	2	38	3
UN00007	UMD-TY 0016	0.16	2	38	3
UN00008	UMD-TY 0017	0.17	2	38	3
UN00009	UMD-TY 0018	0.18	2	38	3
UN00010	UMD-TY 0019	0.19	2	38	3
UN00011	UMD-TY 0020	0.2	2.5	38	3
UN00012	UMD-TY 0021	0.21	2.5	38	3
UN00013	UMD-TY 0022	0.22	2.5	38	3
UN00014	UMD-TY 0023	0.23	2.5	38	3
UN00015	UMD-TY 0024	0.24	2.5	38	3
UN00016	UMD-TY 0025	0.25	3	38	3
UN00017	UMD-TY 0026	0.26	3	38	3
UN00018	UMD-TY 0027	0.27	3	38	3
UN00019	UMD-TY 0028	0.28	3	38	3
UN00020	UMD-TY 0029	0.29	3	38	3
UN00021	UMD-TY 0030	0.3	5	38	3
UN00022	UMD-TY 0031	0.31	5	38	3
UN00023	UMD-TY 0032	0.32	5	38	3
UN00024	UMD-TY 0033	0.33	5	38	3
UN00025	UMD-TY 0034	0.34	5	38	3
UN00026	UMD-TY 0035	0.35	6	38	3
UN00027	UMD-TY 0036	0.36	6	38	3
UN00028	UMD-TY 0037	0.37	6	38	3
UN00029	UMD-TY 0038	0.38	6	38	3
UN00030	UMD-TY 0039	0.39	6	38	3
UN00031	UMD-TY 0040	0.4	7	38	3
UN00032	UMD-TY 0041	0.41	7	38	3
UN00033	UMD-TY 0042	0.42	7	38	3
UN00034	UMD-TY 0043	0.43	7	38	3
UN00035	UMD-TY 0044	0.44	7	38	3
UN00036	UMD-TY 0045	0.45	7	38	3
UN00037	UMD-TY 0046	0.46	7	38	3
UN00038	UMD-TY 0047	0.47	7	38	3
UN00039	UMD-TY 0048	0.48	7	38	3
UN00040	UMD-TY 0049	0.49	7	38	3
UN00041	UMD-TY 0050	0.5	7	38	3
UN00042	UMD-TY 0051	0.51	7	38	3
UN00043	UMD-TY 0052	0.52	7	38	3
UN00044	UMD-TY 0053	0.53	7	38	3
UN00045	UMD-TY 0054	0.54	7	38	3

TYコード	型番	直径	溝長	全長	シャンク径
		φD	ℓ	L	φd
UN00046	UMD-TY 0055	0.55	7	38	3
UN00047	UMD-TY 0056	0.56	7	38	3
UN00048	UMD-TY 0057	0.57	7	38	3
UN00049	UMD-TY 0058	0.58	7	38	3
UN00050	UMD-TY 0059	0.59	7	38	3
UN00051	UMD-TY 0060	0.6	7	38	3
UN00052	UMD-TY 0061	0.61	7	38	3
UN00053	UMD-TY 0062	0.62	7	38	3
UN00054	UMD-TY 0063	0.63	7	38	3
UN00055	UMD-TY 0064	0.64	7	38	3
UN00056	UMD-TY 0065	0.65	7	38	3
UN00057	UMD-TY 0066	0.66	7	38	3
UN00058	UMD-TY 0067	0.67	7	38	3
UN00059	UMD-TY 0068	0.68	7	38	3
UN00060	UMD-TY 0069	0.69	7	38	3
UN00061	UMD-TY 0070	0.7	8	38	3
UN00062	UMD-TY 0071	0.71	8	38	3
UN00063	UMD-TY 0072	0.72	8	38	3
UN00064	UMD-TY 0073	0.73	8	38	3
UN00065	UMD-TY 0074	0.74	8	38	3
UN00066	UMD-TY 0075	0.75	8	38	3
UN00067	UMD-TY 0076	0.76	8	38	3
UN00068	UMD-TY 0077	0.77	8	38	3
UN00069	UMD-TY 0078	0.78	8	38	3
UN00070	UMD-TY 0079	0.79	8	38	3
UN00071	UMD-TY 0080	0.8	10	38	3
UN00072	UMD-TY 0081	0.81	10	38	3
UN00073	UMD-TY 0082	0.82	10	38	3
UN00074	UMD-TY 0083	0.83	10	38	3
UN00075	UMD-TY 0084	0.84	10	38	3
UN00076	UMD-TY 0085	0.85	10	38	3
UN00077	UMD-TY 0086	0.86	10	38	3
UN00078	UMD-TY 0087	0.87	10	38	3
UN00079	UMD-TY 0088	0.88	10	38	3
UN00080	UMD-TY 0089	0.89	10	38	3
UN00081	UMD-TY 0090	0.9	10	38	3
UN00082	UMD-TY 0091	0.91	10	38	3
UN00083	UMD-TY 0092	0.92	10	38	3
UN00084	UMD-TY 0093	0.93	10	38	3
UN00085	UMD-TY 0094	0.94	10	38	3
UN00086	UMD-TY 0095	0.95	10	38	3
UN00087	UMD-TY 0096	0.96	10	38	3
UN00088	UMD-TY 0097	0.97	10	38	3
UN00089	UMD-TY 0098	0.98	10	38	3
UN00090	UMD-TY 0099	0.99	10	38	3

◀前ページより

単位：mm

TYコード	型番	直径	溝長	全長	シャンク径
		φD	ℓ	L	φd
UN00091	<b>UMD-TY 0100</b>	1	10	38	3
UN00092	<b>UMD-TY 0101</b>	1.01	10	38	3
UN00093	<b>UMD-TY 0102</b>	1.02	10	38	3
UN00094	<b>UMD-TY 0103</b>	1.03	10	38	3
UN00095	<b>UMD-TY 0104</b>	1.04	10	38	3
UN00096	<b>UMD-TY 0105</b>	1.05	10	38	3
UN00097	<b>UMD-TY 0106</b>	1.06	10	38	3
UN00098	<b>UMD-TY 0107</b>	1.07	10	38	3
UN00099	<b>UMD-TY 0108</b>	1.08	10	38	3
UN00100	<b>UMD-TY 0109</b>	1.09	10	38	3
UN00101	<b>UMD-TY 0110</b>	1.1	10	38	3
UN00102	<b>UMD-TY 0111</b>	1.11	10	38	3
UN00103	<b>UMD-TY 0112</b>	1.12	10	38	3
UN00104	<b>UMD-TY 0113</b>	1.13	10	38	3
UN00105	<b>UMD-TY 0114</b>	1.14	10	38	3
UN00106	<b>UMD-TY 0115</b>	1.15	10	38	3
UN00107	<b>UMD-TY 0116</b>	1.16	10	38	3
UN00108	<b>UMD-TY 0117</b>	1.17	10	38	3
UN00109	<b>UMD-TY 0118</b>	1.18	10	38	3
UN00110	<b>UMD-TY 0119</b>	1.19	10	38	3
UN00111	<b>UMD-TY 0120</b>	1.2	10	38	3
UN00112	<b>UMD-TY 0121</b>	1.21	10	38	3
UN00113	<b>UMD-TY 0122</b>	1.22	10	38	3
UN00114	<b>UMD-TY 0123</b>	1.23	10	38	3
UN00115	<b>UMD-TY 0124</b>	1.24	10	38	3
UN00116	<b>UMD-TY 0125</b>	1.25	10	38	3
UN00117	<b>UMD-TY 0126</b>	1.26	10	38	3
UN00118	<b>UMD-TY 0127</b>	1.27	10	38	3
UN00119	<b>UMD-TY 0128</b>	1.28	10	38	3
UN00120	<b>UMD-TY 0129</b>	1.29	10	38	3
UN00121	<b>UMD-TY 0130</b>	1.3	10	38	3
UN00122	<b>UMD-TY 0131</b>	1.31	10	38	3
UN00123	<b>UMD-TY 0132</b>	1.32	10	38	3
UN00124	<b>UMD-TY 0133</b>	1.33	10	38	3
UN00125	<b>UMD-TY 0134</b>	1.34	10	38	3
UN00126	<b>UMD-TY 0135</b>	1.35	10	38	3
UN00127	<b>UMD-TY 0136</b>	1.36	10	38	3
UN00128	<b>UMD-TY 0137</b>	1.37	10	38	3
UN00129	<b>UMD-TY 0138</b>	1.38	10	38	3
UN00130	<b>UMD-TY 0139</b>	1.39	10	38	3
UN00131	<b>UMD-TY 0140</b>	1.4	10	38	3
UN00132	<b>UMD-TY 0141</b>	1.41	10	38	3
UN00133	<b>UMD-TY 0142</b>	1.42	10	38	3
UN00134	<b>UMD-TY 0143</b>	1.43	10	38	3
UN00135	<b>UMD-TY 0144</b>	1.44	10	38	3
UN00136	<b>UMD-TY 0145</b>	1.45	10	38	3
UN00137	<b>UMD-TY 0146</b>	1.46	10	38	3
UN00138	<b>UMD-TY 0147</b>	1.47	10	38	3
UN00139	<b>UMD-TY 0148</b>	1.48	10	38	3
UN00140	<b>UMD-TY 0149</b>	1.49	10	38	3
UN00141	<b>UMD-TY 0150</b>	1.5	10	38	3
UN00142	<b>UMD-TY 0151</b>	1.51	10	38	3
UN00143	<b>UMD-TY 0152</b>	1.52	10	38	3
UN00144	<b>UMD-TY 0153</b>	1.53	10	38	3
UN00145	<b>UMD-TY 0154</b>	1.54	10	38	3
UN00146	<b>UMD-TY 0155</b>	1.55	10	38	3
UN00147	<b>UMD-TY 0156</b>	1.56	10	38	3
UN00148	<b>UMD-TY 0157</b>	1.57	10	38	3
UN00149	<b>UMD-TY 0158</b>	1.58	10	38	3
UN00150	<b>UMD-TY 0159</b>	1.59	10	38	3
UN00151	<b>UMD-TY 0160</b>	1.6	12	38	3
UN00152	<b>UMD-TY 0161</b>	1.61	12	38	3

TYコード	型番	直径	溝長	全長	シャンク径
		φD	ℓ	L	φd
UN00153	<b>UMD-TY 0162</b>	1.62	12	38	3
UN00154	<b>UMD-TY 0163</b>	1.63	12	38	3
UN00155	<b>UMD-TY 0164</b>	1.64	12	38	3
UN00156	<b>UMD-TY 0165</b>	1.65	12	38	3
UN00157	<b>UMD-TY 0166</b>	1.66	12	38	3
UN00158	<b>UMD-TY 0167</b>	1.67	12	38	3
UN00159	<b>UMD-TY 0168</b>	1.68	12	38	3
UN00160	<b>UMD-TY 0169</b>	1.69	12	38	3
UN00161	<b>UMD-TY 0170</b>	1.7	12	38	3
UN00162	<b>UMD-TY 0171</b>	1.71	12	38	3
UN00163	<b>UMD-TY 0172</b>	1.72	12	38	3
UN00164	<b>UMD-TY 0173</b>	1.73	12	38	3
UN00165	<b>UMD-TY 0174</b>	1.74	12	38	3
UN00166	<b>UMD-TY 0175</b>	1.75	12	38	3
UN00167	<b>UMD-TY 0176</b>	1.76	12	38	3
UN00168	<b>UMD-TY 0177</b>	1.77	12	38	3
UN00169	<b>UMD-TY 0178</b>	1.78	12	38	3
UN00170	<b>UMD-TY 0179</b>	1.79	12	38	3
UN00171	<b>UMD-TY 0180</b>	1.8	12	38	3
UN00172	<b>UMD-TY 0181</b>	1.81	12	38	3
UN00173	<b>UMD-TY 0182</b>	1.82	12	38	3
UN00174	<b>UMD-TY 0183</b>	1.83	12	38	3
UN00175	<b>UMD-TY 0184</b>	1.84	12	38	3
UN00176	<b>UMD-TY 0185</b>	1.85	12	38	3
UN00177	<b>UMD-TY 0186</b>	1.86	12	38	3
UN00178	<b>UMD-TY 0187</b>	1.87	12	38	3
UN00179	<b>UMD-TY 0188</b>	1.88	12	38	3
UN00180	<b>UMD-TY 0189</b>	1.89	12	38	3
UN00181	<b>UMD-TY 0190</b>	1.9	12	38	3
UN00182	<b>UMD-TY 0191</b>	1.91	12	38	3
UN00183	<b>UMD-TY 0192</b>	1.92	12	38	3
UN00184	<b>UMD-TY 0193</b>	1.93	12	38	3
UN00185	<b>UMD-TY 0194</b>	1.94	12	38	3
UN00186	<b>UMD-TY 0195</b>	1.95	12	38	3
UN00187	<b>UMD-TY 0196</b>	1.96	12	38	3
UN00188	<b>UMD-TY 0197</b>	1.97	12	38	3
UN00189	<b>UMD-TY 0198</b>	1.98	12	38	3
UN00190	<b>UMD-TY 0199</b>	1.99	12	38	3
UN00191	<b>UMD-TY 0200</b>	2	12	38	3
UN00192	<b>UMD-TY 0201</b>	2.01	12	38	3
UN00193	<b>UMD-TY 0202</b>	2.02	12	38	3
UN00194	<b>UMD-TY 0203</b>	2.03	12	38	3
UN00195	<b>UMD-TY 0204</b>	2.04	12	38	3
UN00196	<b>UMD-TY 0205</b>	2.05	12	38	3
UN00197	<b>UMD-TY 0206</b>	2.06	12	38	3
UN00198	<b>UMD-TY 0207</b>	2.07	12	38	3
UN00199	<b>UMD-TY 0208</b>	2.08	12	38	3
UN00200	<b>UMD-TY 0209</b>	2.09	12	38	3
UN00201	<b>UMD-TY 0210</b>	2.1	12	38	3
UN00202	<b>UMD-TY 0211</b>	2.11	12	38	3
UN00203	<b>UMD-TY 0212</b>	2.12	12	38	3
UN00204	<b>UMD-TY 0213</b>	2.13	12	38	3
UN00205	<b>UMD-TY 0214</b>	2.14	12	38	3
UN00206	<b>UMD-TY 0215</b>	2.15	12	38	3
UN00207	<b>UMD-TY 0216</b>	2.16	12	38	3
UN00208	<b>UMD-TY 0217</b>	2.17	12	38	3
UN00209	<b>UMD-TY 0218</b>	2.18	12	38	3
UN00210	<b>UMD-TY 0219</b>	2.19	12	38	3
UN00211	<b>UMD-TY 0220</b>	2.2	12	38	3
UN00212	<b>UMD-TY 0221</b>	2.21	12	38	3
UN00213	<b>UMD-TY 0222</b>	2.22	12	38	3
UN00214	<b>UMD-TY 0223</b>	2.23	12	38	3

次ページへ▶

◀前ページより

単位：mm

TYコード	型番	直径	溝長	全長	シャンク径
		φD	ℓ	L	φd
UN00215	UMD-TY 0224	2.24	12	38	3
UN00216	UMD-TY 0225	2.25	12	38	3
UN00217	UMD-TY 0226	2.26	12	38	3
UN00218	UMD-TY 0227	2.27	12	38	3
UN00219	UMD-TY 0228	2.28	12	38	3
UN00220	UMD-TY 0229	2.29	12	38	3
UN00221	UMD-TY 0230	2.3	12	38	3
UN00222	UMD-TY 0231	2.31	12	38	3
UN00223	UMD-TY 0232	2.32	12	38	3
UN00224	UMD-TY 0233	2.33	12	38	3
UN00225	UMD-TY 0234	2.34	12	38	3
UN00226	UMD-TY 0235	2.35	12	38	3
UN00227	UMD-TY 0236	2.36	12	38	3
UN00228	UMD-TY 0237	2.37	12	38	3
UN00229	UMD-TY 0238	2.38	12	38	3
UN00230	UMD-TY 0239	2.39	12	38	3
UN00231	UMD-TY 0240	2.4	12	38	3
UN00232	UMD-TY 0241	2.41	12	38	3
UN00233	UMD-TY 0242	2.42	12	38	3
UN00234	UMD-TY 0243	2.43	12	38	3
UN00235	UMD-TY 0244	2.44	12	38	3
UN00236	UMD-TY 0245	2.45	12	38	3
UN00237	UMD-TY 0246	2.46	12	38	3
UN00238	UMD-TY 0247	2.47	12	38	3
UN00239	UMD-TY 0248	2.48	12	38	3
UN00240	UMD-TY 0249	2.49	12	38	3
UN00241	UMD-TY 0250	2.5	12	38	3
UN00242	UMD-TY 0251	2.51	12	38	3
UN00243	UMD-TY 0252	2.52	12	38	3
UN00244	UMD-TY 0253	2.53	12	38	3
UN00245	UMD-TY 0254	2.54	12	38	3
UN00246	UMD-TY 0255	2.55	12	38	3
UN00247	UMD-TY 0256	2.56	12	38	3
UN00248	UMD-TY 0257	2.57	12	38	3
UN00249	UMD-TY 0258	2.58	12	38	3
UN00250	UMD-TY 0259	2.59	12	38	3
UN00251	UMD-TY 0260	2.6	12	38	3
UN00252	UMD-TY 0261	2.61	12	38	3
UN00253	UMD-TY 0262	2.62	12	38	3

TYコード	型番	直径	溝長	全長	シャンク径
		φD	ℓ	L	φd
UN00254	UMD-TY 0263	2.63	12	38	3
UN00255	UMD-TY 0264	2.64	12	38	3
UN00256	UMD-TY 0265	2.65	12	38	3
UN00257	UMD-TY 0266	2.66	12	38	3
UN00258	UMD-TY 0267	2.67	12	38	3
UN00259	UMD-TY 0268	2.68	12	38	3
UN00260	UMD-TY 0269	2.69	12	38	3
UN00261	UMD-TY 0270	2.7	12	38	3
UN00262	UMD-TY 0271	2.71	12	38	3
UN00263	UMD-TY 0272	2.72	12	38	3
UN00264	UMD-TY 0273	2.73	12	38	3
UN00265	UMD-TY 0274	2.74	12	38	3
UN00266	UMD-TY 0275	2.75	12	38	3
UN00267	UMD-TY 0276	2.76	12	38	3
UN00268	UMD-TY 0277	2.77	12	38	3
UN00269	UMD-TY 0278	2.78	12	38	3
UN00270	UMD-TY 0279	2.79	12	38	3
UN00271	UMD-TY 0280	2.8	12	38	3
UN00272	UMD-TY 0281	2.81	12	38	3
UN00273	UMD-TY 0282	2.82	12	38	3
UN00274	UMD-TY 0283	2.83	12	38	3
UN00275	UMD-TY 0284	2.84	12	38	3
UN00276	UMD-TY 0285	2.85	12	38	3
UN00277	UMD-TY 0286	2.86	12	38	3
UN00278	UMD-TY 0287	2.87	12	38	3
UN00279	UMD-TY 0288	2.88	12	38	3
UN00280	UMD-TY 0289	2.89	12	38	3
UN00281	UMD-TY 0290	2.9	12	38	3
UN00282	UMD-TY 0291	2.91	12	38	3
UN00283	UMD-TY 0292	2.92	12	38	3
UN00284	UMD-TY 0293	2.93	12	38	3
UN00285	UMD-TY 0294	2.94	12	38	3
UN00286	UMD-TY 0295	2.95	12	38	3
UN00287	UMD-TY 0296	2.96	12	38	3
UN00288	UMD-TY 0297	2.97	12	38	3
UN00289	UMD-TY 0298	2.98	12	38	3
UN00290	UMD-TY 0299	2.99	12	38	3
UN00291	UMD-TY 0300	3	12	38	3

**UMD-TY 切削条件表**

被削材	炭素鋼 S45C/S50C		アルミ合金 A5052 等		樹脂 ポリカーボネート等	
	直径(D) (mm)	回転速度 (min-1)	送り速度 (mm/min)	回転速度 (min-1)	送り速度 (mm/min)	送り速度 (mm/min)
0.3	20,000	40	20,000	320	20,000	320
0.4	17,400	50	20,000	550	20,000	550
0.5	15,900	80	20,000	800	20,000	800
0.6	14,100	80	19,900	880	19,900	880
0.7	12,800	90	19,900	950	19,900	950
0.8	11,900	100	19,900	1,000	19,900	1,000
0.9	10,500	100	17,600	1,020	17,600	1,020
1	9,500	100	15,900	1,080	15,900	1,080
2	5,600	170	9,500	820	9,500	820
3	3,700	150	6,400	550	6,400	550

【備考】 ステップ量：アルミ合金、樹脂 0.2D~0.5D。 その他 0.1D~0.2D。



## 取扱上の注意

ドリルをご使用いただく際には、切削条件の不適合、切りくずの巻き付きや堆積、工具の摩耗などにより発熱や発火、加工物の損傷など重大な事故を招くことがありますので、十分ご注意ください。ドリルは鋭利な刃物ですから、取扱に際しては十分ご注意ください。

- 切刃に直接触れると怪我をすることがありますので、ケースから抜き取る際は十分ご注意ください。
- ドリルを落とした場合、飛散した刃先で怪我をすることがありますので、取扱にご確認ください。
- 工具への衝撃的負荷や工具損傷により切削抵抗が急増し、工具が飛散することがありますので、安全カバーや保護めがね等の保護具をご使用ください。
- 切削条件表は切削条件の目安を示すものです。実際の加工では被削材の材種、加工形状、機械剛性、主軸などの加工環境により、加工条件の最適化が必要となる場合があります。
- 発火性の高い切削油の使用は避けてください。

